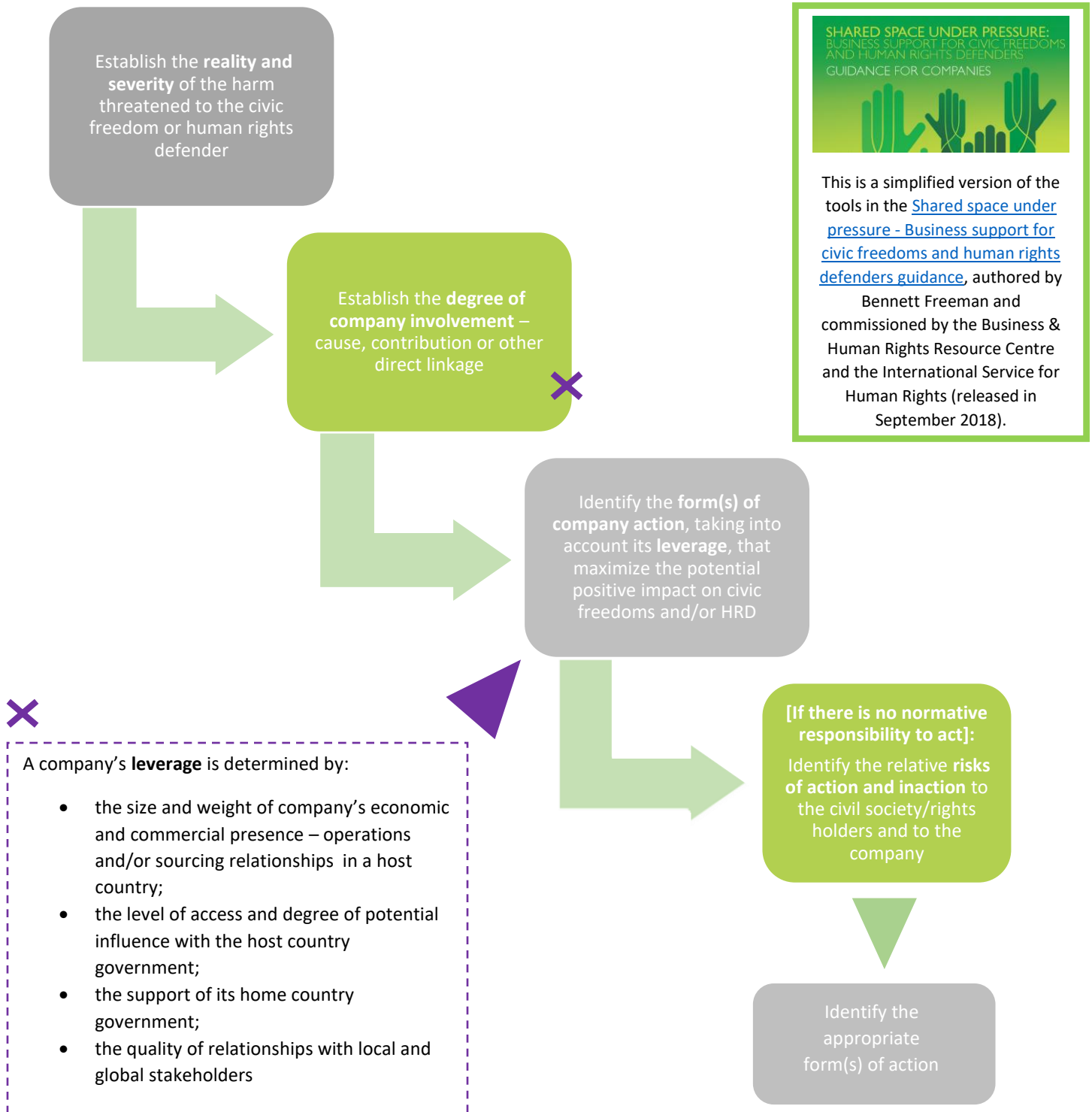
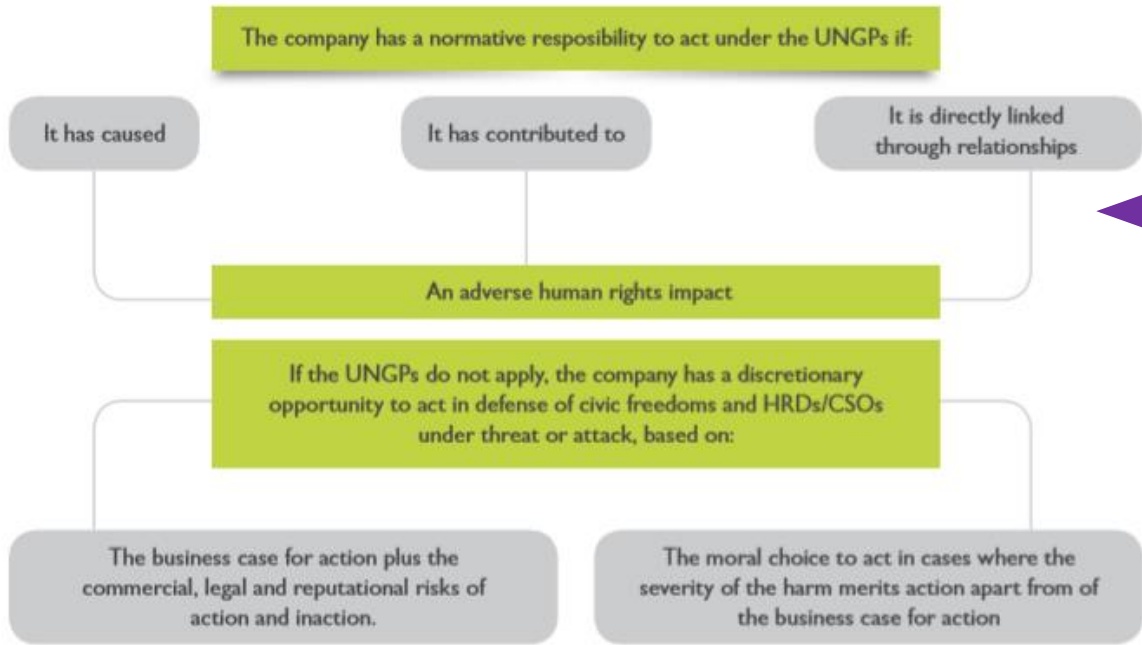


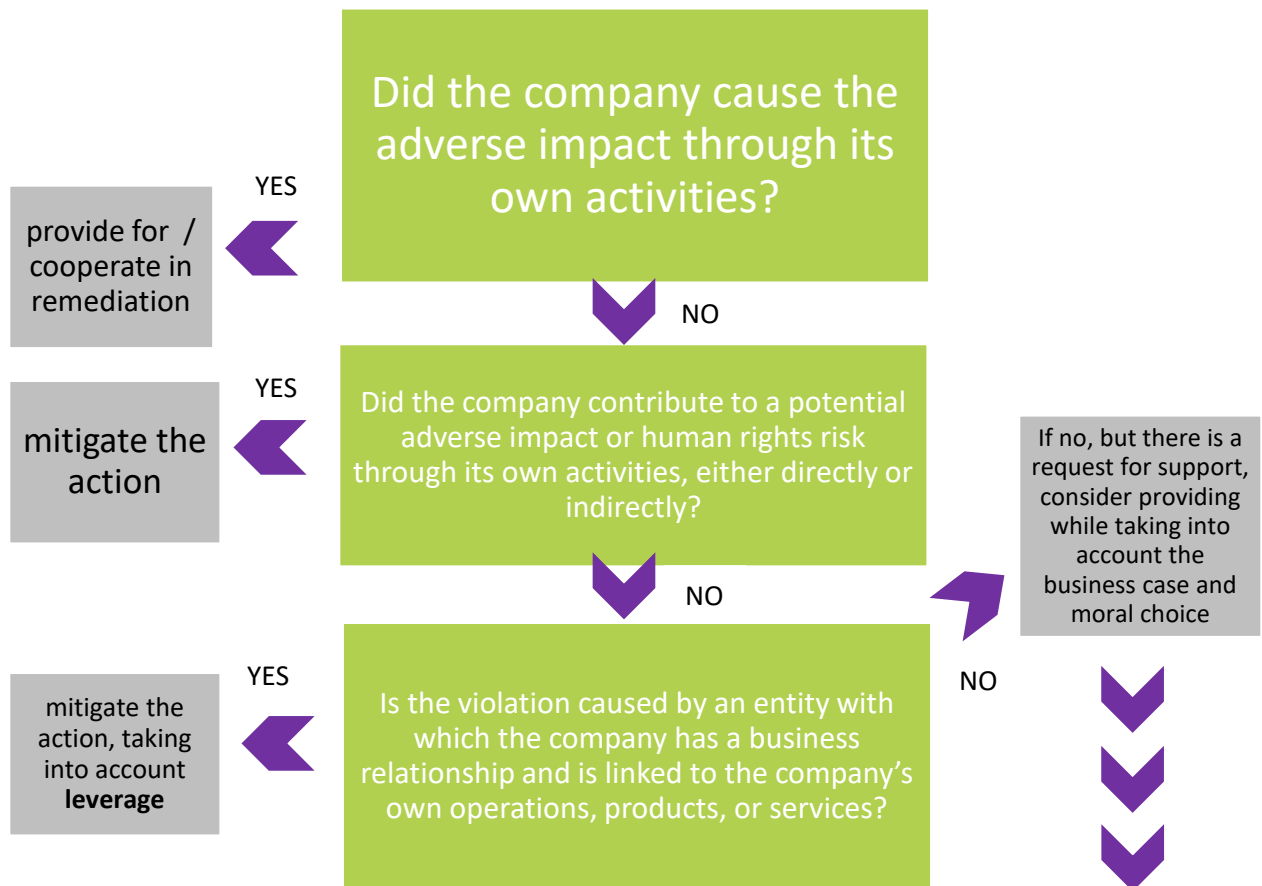
'Shared Space under pressure' decision making tools:



- Sources of direct linkage:**
- Company operations, products and services
 - Company or subsidiary employees
 - Supply chain relationships beyond first tier
 - Legal and commercial relationships with govt.
 - Operational and investment relationships
 - Geographic proximity to communities



How is the adverse human rights impact tied to the company?



If the company did not cause, contribute and was not directly related to the risk:

